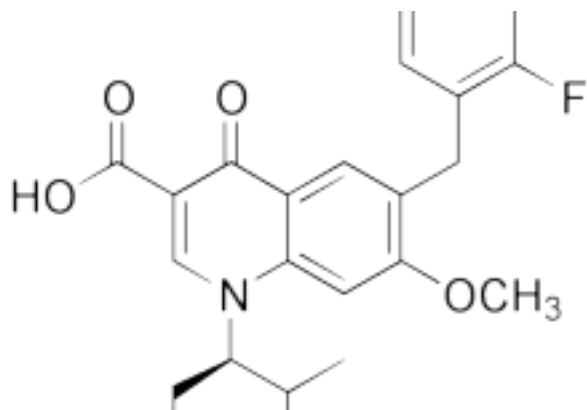


HIV treatments information

elvitegravir



Elvitegravir is an [experimental](#) (Of a drug) Not licensed for use in humans, or as a treatment for a particular condition. Experimental drugs are studied in clinical trials to determine their safety and efficacy, and are sometimes made available via Special Access Schemes prior to their approval. integrase inhibitor currently in [phase III](#) A large clinical trial designed to establish whether a drug is effective and safe enough for widespread use. Phase III studies include expanded controlled and uncontrolled trials after preliminary evidence suggesting effectiveness of the drug has been obtained, and are intended to gather additional information to evaluate the overall benefit-risk relationship of the drug and provide an adequate basis for physician labeling. clinical trials.

Like raltegravir (the only drug in this class approved for use in Australia) elvitegravir will be of most use to people with multiple drug resistance.

Integrase inhibitors target an enzyme called integrase which HIV uses to integrate its genetic code into human cells. Because this is a different point of action to that targeted by other [drug classes](#), there is a good chance that people who have failed several prior treatment regimens will benefit from this drug, especially if it is combined with an optimised background regimen.

According to the results of [phase II](#) A smaller clinical trial designed to establish whether a drug is effective. Phase II studies are conducted to evaluate the effectiveness of the drug for a particular indication or indications in patients with the disease or condition under study and to determine the common short-term side effects and risks. If there is evidence that the drug is effective, a Phase III study is undertaken, with a larger number of participants, to confirm this. [clinical](#) Pertaining to or founded on observation and treatment of participants, as distinguished from theoretical or basic science. trials, patients taking once-daily elvitegravir boosted by ritonavir had greater reductions in [viral load](#) A measurement of the quantity of HIV RNA in the blood. Viral load blood test results are expressed as the number of copies (of HIV) per milliliter of blood plasma. after 24 weeks compared to individuals randomized to receive a ritonavir-boosted [protease inhibitor](#) A type of anti-HIV drug that works by preventing the production of an enzyme, protease, that HIV needs to replicate..

UPDATE March 2011

Elvitegravir appears to be working well in a Phase III clinical trial involving treatment-experienced patients, according to a March 23 press release by Gilead, the company who manufactures the drug. Though the study will last about two years (96 weeks), Gilead says the study's primary goal has been met: comparable results between patients receiving either elvitegravir or Merck's approved integrase inhibitor Isentress (raltegravir) for 48 weeks

About this treatment

Generic name:

elvitegravir (EVG)

elvitegravir

From the NAPWA website at <http://www.napwa.org.au/rx/ii/elvitegravir>

Pronunciation: *el-vy-TEG-ra-veer*
Also known as: GS-9137, JTK-303
Drug class: integrase inhibitor
Availability in Australia:

- **Not available on the Pharmaceutical Benefits Scheme (PBS).**
- This drug may be available through clinical trials in Australia.
- You may be able to import this drug from overseas for your personal use.

Links:

- http://www.aidsmeds.com/archive/GS-9137_1638.shtml
- http://www.prn.org/index.php/management/article/integrase_inhibitors_raltegravir_elvitegravir_hiv_disease_478/

Taking it

Like all anti-HIV drugs, elvitegravir must be taken in combination with other drugs to be completely effective. Your doctor will advise you on the right combination of drugs to suit your circumstances.

Dosage

150mg once daily combined with 100mg ritonavir.

Regardless of what you read on this website or elsewhere, you should always take your medications according to your doctor's instructions. If you're unsure, speak to your doctor or pharmacist.

Side effects

All drugs can produce side effects in some people. These may be mild, moderate or severe, so you should be aware of potential side effects before starting any drug, and speak to your doctor if you experience side effects that concern you.

Interactions with other drugs

Studies on potential interactions between elvitegravir and other drugs have not yet been reported, but are planned and ongoing.